



ANNUAL REPORT 2017-2018

NOTHING'S BEYOND REACH.

ST. MICHAEL'S HOSPITAL TAKES ON
THE TOUGHEST CASES, ANYWHERE.

THE HEADLINES 2017-18

WINNER

St. Michael's Dr. James Maskalyk's memoir, *Life on the Ground Floor: Letters from the Edge of Emergency Medicine*, wins the 2017 Hilary Weston Writers' Trust Prize for Nonfiction.

WORLD-FIRST

Cardiologist Dr. Neil Fam performs a pioneering procedure by implanting a new device called the Pascal system in an 82-year-old patient with a life-threatening heart condition.

1,000,000

The number of patients and visitors who came to St. Michael's this year.

INDUCTEE

Dr. Philip Berger – who co-founded Canadian Doctors for Refugee Care and convinced the Federal Court of Canada to restore health coverage to 100,000 refugees – is inducted into the Canadian Medical Hall of Fame.

#1

St. Michael's remains the top pick among medical residents across Canada.

NEW

Dr. Tim Rutledge is appointed president and CEO of our newly formed health network that brings together Providence Healthcare, St. Joseph's Health Centre and St. Michael's Hospital.

HONoured

St. Michael's is honoured for outstanding surgical outcomes by the American College of Surgeons.

GAME-CHANGING

Dr. Xavier Montalban, one of the world's leading multiple sclerosis researchers, is recruited from Barcelona to lead St. Michael's new BARLO MS Centre.

“If I didn't come to this hospital, I honestly don't think I'd be alive right now.”

— Sarah Knight, neurosurgery patient and planned giving donor

MAIN EVENT

St. Michael's Foundation's *Angel Ball* raises \$4 million (net) to complete our record-setting \$237-million *Inspire 2018* campaign.

\$237 Million

St. Michael's Foundation hits a fundraising high to support the hospital's Peter Gilgan Patient Care Tower, Slaight Family Emergency Department and other campus renovations.

GOLD

The American Association of Critical Care Nurses gives the Beacon Award for Excellence Gold to St. Michael's Medical-Surgical Intensive Care Unit – the only unit in Canada to hold this distinction.

100%

In a North American first, every St. Michael's physician donated to the Foundation's last three capital fundraising campaigns.

“We have an opportunity which I can only describe as a dream.”

– Dr. Xavier Montalban, internationally renowned neurologist and head of St. Michael's world-leading BARLO MS Centre

JANE'S LIFE-THREATENING BRAIN INJURY HAPPENED

ON TORONTO'S HIGHWAY 400.

THE CITY'S TOP CRITICAL CARE TEAM STOOD BY

AT QUEEN AND BOND.

Thanks to The Slight Family Foundation, our new, state-of-the-art Emergency Department means the best life-saving technology for twice as many patients.

As the helicopter landed on St. Mike's helipad, a team of doctors raced to get Jane into emergency surgery after a motorcycle crash sent her careening headfirst into a highway guardrail.

Because of St. Michael's world-renowned trauma team, Jane recovered and walked back into her life several months later.

Every year, hundreds of patients like Jane, whose lives are on the line, are rushed to St. Michael's Emergency Department. Our relentless team of critical care experts are trained to see obstacles as opportunities. When one road is blocked, they blaze new trails. St. Michael's has been extending that level of care to over 78,000 patients annually. The problem? We just didn't have the space to provide the kind of care we're known for.

Thanks to a landmark \$10 million investment from the Slight family, we're now building a twice-as-large, state-of-the-art emergency department that will complement the expertise of our world-class physicians and staff.

When it's finished, the Slight Family Emergency Department will have medical imaging on site so patients receive care faster. The department will also feature an enhanced trauma room, a dedicated mental-health area, and an ambulatory area.

We've already completed phase one of the transformation – the Arrell Acute Care Area – and have begun caring for patients in single-patient rooms with more space for loved ones, and walls instead of curtains to maximize confidentiality, minimize noise and prevent infection. The area also incorporates best practices in health-care design, such as tempered glass doors that switch from transparent to opaque, allowing clinical staff to monitor patients or offer privacy when it's needed.

Jane survived her harrowing ordeal because she was brought to St. Michael's, where our physicians, nurses and staff rise to every challenge.



WHILE TIM IS BATTLING
MULTIPLE SCLEROSIS

AT HIS HOME ABROAD,

HIS DISEASE IS BEING
TACKLED BY SCIENTISTS

IN TORONTO.

Thanks to the Barford and Love families,
St. Michael's BARLO MS Centre will change
the face of multiple sclerosis everywhere.

Canada holds the dubious distinction of having the highest rate of MS in the world – approximately 100,000 Canadians live with the disease. Every eight hours, another person is diagnosed.

Here's the good news. Toronto will soon be home to a world-leading MS centre that is on track to stopping this intractable disease.

That's in large part thanks to a transformational \$20 million contribution from the Barford and Love families.

We're perfectly positioned to capitalize on this remarkable gift. St. Michael's already has some of the most preeminent neurologists in the country. We've long been a global powerhouse in MS research. And we've recruited Dr. Xavier Montalban, one of the most prominent MS neurologists in the world.

The BARLO MS Centre will integrate basic research, translational research and clinical care all in one place. That means we'll be able to identify new drugs and figure out how to use old drugs in new ways. We'll test drugs in labs and then in fish – St. Michael's has one of the most advanced zebrafish facilities in the world – and finally in clinical trials.

And the care will be unique. Patients won't just get a doctor. They'll get a team of doctors, nurses, a social worker, an occupational therapist, a physical therapist, a speech therapist and a neuropsychologist, all in one place. Because MS isn't just a disease that affects people's bodies. It tears apart marriages. It puts people out of jobs. It disrupts parenting. It impacts families. The stress of the disease can be as debilitating as the disease itself.

For the first time, we have the chance to catapult advances in MS to a whole new sphere of progress. Join the Barfords and the Loves in bringing the BARLO MS Centre to life.



AS POLICYMAKERS IN OTTAWA

EXPLORE A NATIONAL
PHARMACARE PLAN,

IT IS BEING INFORMED
BY OUR RESEARCHERS

AT VICTORIA AND SHUTER.

Dr. Nav Persaud's groundbreaking work has shown that providing essential medicines free of charge will remove financial barriers and save billions.

Access to medications can mean the difference between life and death. Yet research has shown that 2.4 million Canadians don't take the drugs they need because they can't afford them. When people who are struggling to make ends meet do pay for their medicine, they often give up essentials like heat and food. Canada is the only high-income country in which health-care services are publicly insured but medications aren't.

It's time for change.

Leading the charge is Dr. Nav Persaud, a top researcher at St. Michael's preeminent Centre for Urban Health Solutions (C-UHS) and a fierce advocate for marginalized populations. Dr. Persaud and his colleagues developed a list of 140 drugs – dubbed Essential Medicines – that would cover most Canadians' medical needs. Remarkably, if these medicines were offered at no charge to *all* Canadians, the system would save an astounding \$3.1 billion a year.

Dr. Persaud's work is just one of the invaluable research projects being undertaken by the C-UHS. The Centre's unique research mandate, and the programs it produces as a result, not only change the lives of the disadvantaged, but offer improvements to the systems that affect all Canadians.

Scientists and clinicians like Dr. Persaud couldn't do it without the support of our donors.



AT ST. MICHAEL'S,

24 HEALTH-CARE
SPECIALISTS MOBILIZED
FOR EMERLINDA'S
EMERGENCY DELIVERY.

IT'S NO WONDER WE ARE
KNOWN FOR TAKING ON
THE HIGHEST-RISK CASES

FROM ACROSS THE COUNTRY.

We're building a new NICU facility because moments like this happen every day.

When it's a matter of moms and babies, St. Michael's neonatal experts are ready 24/7.

So when Emerlinda, a Jehovah's Witness whose religion forbid her to have a blood transfusion, needed an emergency C-section, a hysterectomy and additional surgery, she came to St. Michael's – the only hospital in the country able to perform the complex delivery.

It's not surprising that we're a national leader in treating pregnant moms and babies. Or that we set national standards for how babies should be resuscitated. Or that we inform national policy on treating neonatal illnesses. Or that we train the majority of U of T obstetric and pediatric residents – including those from SickKids. Or that we treat more pregnant moms who suffer from homelessness, HIV, mental health challenges or drug addiction than any hospital in the province.

To keep advancing neonatal care, we need facilities that match the expertise of our teams. So we're building a state-of-the-art maternity floor with obstetrics, NICU and a recovery unit all on one floor. That means moms won't be separated from their babies. And it means that if anything goes wrong during a normal delivery, moms can be treated right where they are by world-class experts.

Our new NICU will have private, spacious rooms and a unique transitional care unit outfitted with the most advanced equipment and the latest in infection control. The NICU will be designed to keep families together because St. Michael's studies have shown that's what produces the best outcomes. We will provide the right care, in the right space, at the right time. Everyone benefits, including our most disadvantaged patients.

The NICU will be on the 15th floor of the Peter Gilgan Patient Care Tower and will provide expectant mothers with the most comprehensive care in the country from the world's finest health-care experts.

St. Michael's is building the NICU of the future. We need your help to make it happen.



AROUND THE WORLD,

FEMALE SURGEONS ARE
FINALLY GETTING THE
RECOGNITION THEY DESERVE.

HERE AT HOME,

DRS. ANDERSON, BAXTER
AND THEIR COLLEAGUES
ARE LEADING THE WAY.

At St. Michael's, diversity and equity are leading priorities.

Not long ago, *The New Yorker* magazine featured on its cover “Operating Theatre,” an illustration by the French artist Malika Favre of four female members of a surgical team gazing down over a patient on an operating table.

For Dr. Nancy Baxter, chief of St. Michael's general surgery, and Dr. Jennifer Anderson, chief of the hospital's ear, nose and throat department, that was a rallying cry. They recreated the illustration with St. Michael's very own surgeons. Same surgical caps and masks, same stance, same piercing eyes.

Assembling a St. Mike's team of female surgeons was easy. That's in part because of our commitment to addressing gender imbalance.

At St. Mike's, women make up half of our executive team. And experts like Dr. Sharon Straus, the hospital's interim physician-in-chief and director of knowledge translation, are publishing influential research on gender equity that is setting the standard for the health-care industry.

St. Michael's leadership knows that gender balance benefits the entire research and medical community, which in turn benefits all our patients.

We know we're never perfect. So we're assessing ourselves and making changes to ensure our makeup reflects the community we serve.

Because, at the end of the day, we want to ensure that equity at St. Mike's is a reality.



HERE AT ST. MICHAEL'S

GAIL WAS THE WORLD'S
FIRST PATIENT TO HAVE THE
PASCAL DEVICE IMPLANTED
IN HER TRICUSPID VALVE.

IT'S TRANSFORMING
HOW CARDIOLOGISTS TREAT
HIGH-RISK HEART PATIENTS

EVERYWHERE.

Thanks to Dr. Neil Fam and his team,
patients with damaged heart valves
have new life-saving options.

In 1968, St. Mike's performed Canada's first successful heart transplant. We haven't stopped innovating since.

Our specialists are globally renowned for pioneering cardiac interventions that save lives.

Just this past year, Dr. Fam and his team became the world's first to use the groundbreaking Pascal system to treat a patient's damaged tricuspid valve.

At 82, Gail* had been hospitalized five times for heart failure and was considered too high-risk for conventional surgery. After the Pascal system was inserted, her recovery went so well that she was discharged from hospital three days later. According to Dr. Fam, her quality of life has improved dramatically. And she's had no further hospitalizations since.

Gail's situation is not unique. More and more patients are simply too fragile or medically unfit for open-heart surgery. Without care, many face life-threatening risks.

The good news is that St. Michael's heart specialists have saved countless lives by using other innovative devices to seal leaking heart valves. For instance, Dr. Fam and his colleagues are now North American leaders in transcatheter tricuspid intervention (TTI), a minimally invasive procedure that uses a novel device called MitraClip to repair damaged heart valves. And they were the first in Canada to do it.

At St. Michael's, we're known for our ability to tailor procedures to the needs of our patients – and for our commitment to leaving no stone unturned.

* Out of concern for privacy, the patient's name has changed.





IN OPERATING ROOMS EVERYWHERE,
DETERMINING WHAT WENT
WRONG IS NEVER EASY.

AT ST. MICHAEL'S,
DR. GRANTCHAROV
HAS INVENTED THE
BLACK BOX THAT COULD
CHANGE EVERYTHING.

Thanks to innovations like this, St. Michael's is setting new standards of practice.

When black boxes were introduced in the aviation industry, preventable errors dropped dramatically.

That's the idea behind Dr. Teodor Grantcharov's work at St. Michael's International Centre for Surgical Safety. As the Keenan Chair in Surgery, Dr. Grantcharov wants to disrupt surgical practice around the world.

The small metal box records everything that happens in operating rooms. The key to its success lies in post-surgery data analysis and the safety solutions that result. Now, surgeons have reams of information they can use to scrutinize and perfect their technique.

For instance, research has shown that 84 per cent of errors in weight-loss surgery happen during two key steps.

This knowledge helps surgeons master those two skills, increasing chances of eliminating future errors. It will also save billions in health-care costs.

Dr. Grantcharov's work is already changing the way surgery is performed at hospitals in Canada, Europe and the U.S.

Investing in this medical breakthrough will make it standard practice around the world.





WORLD EXPERTS

ARE PREDICTING A
GLOBAL FLU PANDEMIC.



ST. MICHAEL'S

ZEBRAFISH RESEARCH
JUST MIGHT PROVIDE
THE CURE.



Thanks to three *Angels Den* judges,
our researchers will discover whether
zebrafish can cure the flu.

St. Michael's *Angels Den* is a battle for medical breakthroughs.

The competition is modelled after TV's *Dragons' Den* and comes replete with the celebrity judges everyone knows so well: retail powerhouse Joe Mimran, finance guru Michael Wekerle and tech entrepreneur Michele Romanow.

During one inspiring evening, a live audience watches St. Michael's all-star scientists pitch revolutionary research projects to a panel of jurors and judges for a chance to win financial backing.

Last year's winning teams – the Flu Fighters and IRON MOM – were each awarded \$50,000 for their groundbreaking research.

With influenza killing millions of people every year and global experts predicting another severe outbreak, Keenan Research Centre for Biomedical Science researchers Drs. Warren Lee and Xiao-Yan Wen formed the Flu Fighters. The team is using zebrafish – tiny, inexpensive fish that are easily grown – to screen thousands of compounds to determine which have the greatest potential to protect against the next flu pandemic.

Team IRON MOM's two hematologists, Drs. Michelle Sholzberg and Lisa Hicks, developed tools for doctors to easily recognize low iron in pregnant women and empower them in their own health care. Anemia during pregnancy – which affects about 40 per cent of pregnant women – can cause premature delivery, low birthweight, postpartum depression and even death.

Our globally renowned scientists are able to take on some of the world's most intractable challenges because of our state-of-the-art facilities and visionary donors.



The Li Ka Shing Knowledge Institute. The Keenan Research Centre. The Slight Family Emergency Department. The Peter Gilgan Patient Care Tower. The BARLO MS Centre.

These transformational projects have played an integral role in establishing St. Michael's Hospital as a world-class research and health-care institution.

And they're all because of you.

I'm sure you've heard this before but St. Michael's is home to a family of donors and volunteers that is the envy of Toronto's philanthropic community. It's easy to see why. Though I've been at the Foundation for nearly a year now, I am still amazed by the relentless commitment of our die-hard donors who go-to-the-wall for St. Michael's patients, day in and day out.

Thanks to the work of my legendary predecessor, Alayne Metrick, support for our Foundation transcends geographic and generational lines. We have donors in every age group in countries around the world. We have volunteers who step up over and over again. We have a community that has made St. Michael's a part of their lives.

Over the past months, we've been gearing up to take the Foundation's success to new heights. We have plans to expand our network, appeal to diverse communities and put in place new fundraising initiatives to reach more people, in more ways. To do so, we are building visionary fundraising teams that deliver the customized experiences that matter most to donors. And we are instilling in our Foundation a culture of continuous innovation.

I offer my deepest thanks to our outgoing board chair, Frank Techar, who has offered mentorship and unwavering support. And with Frank's transition, I'm so looking forward to working with our new board chair, John Barford, as we embark on the next phase of the Foundation's future.

For the past nine years, St. Michael's Foundation has been fortunate to work hand-in-hand with Dr. Bob Howard, then president and CEO of St. Michael's Hospital and a health-care visionary. As it happens, he's not just an outstanding physician and institutional leader. He's also a great fundraiser. So we are not letting him go. Dr. Howard will continue to advise the Foundation and we are thrilled.

And finally, I'm looking forward to working with Dr. Tim Rutledge, the new president and CEO of the health-care network that brings Providence Healthcare, St. Joseph's Health Centre and St. Michael's Hospital under one umbrella. Dr. Rutledge will lead St. Michael's physicians, nurses and staff through the final phase of the hospital's transition and continue to foster its intrepid approach to medicine that has earned St. Michael's its status as a national leader.

It is your generosity that has made St. Michael's possible. Because of you, nothing is beyond reach.



*Foundation president Lili Litwin with
Foundation vice chair John Barford*

What struck me most when looking back on my last three years as St. Michael's Foundation board chair, is how great the team is. And by 'team' I mean the doctors, nurses, medical and research staff, the hospital's senior leaders, the Foundation staff and, of course, our supporters and donors.

Because that's what we are. One team making great things happen, together.

There is no doubt that the care patients receive at St. Michael's is second to none because it's driven by authentic compassion and respect for patients. And we're constantly looking to improve the facilities where care takes place. The new Neonatal Intensive Care Unit (NICU) is one example. We're building an unparalleled NICU to match our renowned team. With obstetrics, the NICU and the Recovery Unit all on one floor, moms and babies are no longer separated if the mother needs specialized, emergency care. This is something no one else in the city has.

There is also no doubt that great medical innovation happens at St. Michael's. Just last November, we announced plans to build the world's leading treatment and research centre for multiple sclerosis – the BARLO MS Centre – thanks to the transformational commitments made by the Barford and Love families. It will provide patients with support from an interdisciplinary team of neurologists, social workers, physiotherapists and occupational therapists, with possibilities to participate in research – all in one place.

There is no doubt that all of this is made possible by the generosity of our donors. Your commitment to St. Michael's makes a difference to so many patients and helps drive all of the great work forward. You are an essential part of 'Team St. Michael's'. To all of our donors, I'd like to express a heartfelt thank you.


It has been a privilege to be a part of this great team. Thank you. As I pass the baton on to John Barford, our new chair, I know the Foundation is in terrific hands.

Frank Techar
Chair
St. Michael's Foundation



Foundation chair Frank Techar

Lili Litwin, CFRE
President
St. Michael's Foundation



OUR DONORS IN ACTION

Our donors are a fierce community of passionate champions for St. Michael's Hospital.

They have bold vision, unbridled generosity and a relentless commitment to excellence. There are many ways to drive transformation at St. Michael's, and our donors do it all: monthly donations, gift planning, fundraising campaigns, special events, gifts in tribute and memory, and volunteering. Thanks to our tireless community, nothing is beyond our reach.

OUR SIGNATURE EVENTS

ANGEL BALL



More than 1,500 guests dined on delectable dishes created by celebrity chef Mark McEwan while watching live performances by Chaka Khan, Thelma Houston and Kayla Diamond.



Barbara Hackett & Mayor of Toronto John Tory at one of the city's most inspiring parties – which raised \$4 million net in support of St. Michael's Slaughter Family Emergency Department to complete our most successful fundraising campaign in history.

Canadian philanthropist and music industry icon Gary Slaight with wife Donna (left) and daughters Chrissy and Ali.



St. Michael's chief of critical care Dr. Andrew Baker & wife Jane Merkley with St. Michael's president & CEO Dr. Bob Howard & wife Dr. Brenda McDowell.



You had me at halo. Celebrating St. Michael's 125th anniversary in style.

ANGELS DEN



A Battle for Breakthroughs between St. Michael's best and brightest researchers to win funding for their life-changing innovations.

From left: co-chair Gwen Harvey, judges Michael Wekerle and Michele Romanow, co-chairs John Hunkin and Melissa Martin, and judge Joe Mimran.

Social Innovation winners, Drs. Lisa Hicks and Michelle Sholzberg of team IRON MOM, developed tools to help fight low iron in pregnant women.

Biomedical Innovation and People's Choice winners, Drs. Xiao-Yan Wen and Warren Lee of team Flu Fighters, are using zebrafish to find new compounds to treat the influenza virus.



CUMULATIVE GIFTS

We pay tribute here to the special friends who lead by example through their wonderful generosity and deep commitment to St. Michael’s.

The following lists those individuals, corporations and foundations who have given or pledged more than \$500,000 over the years to support Toronto’s Urban Angel.

GUARDIANS (\$30,000,000 +)

Peter Gilgan
Patrick & Barbara Keenan and Family
Li Ka Shing (Canada) Foundation

ANGELS (\$10,000,000-\$24,999,999)

John & Jocelyn Barford
Element Fleet Management
Louis L. Odette & Family
The Slight Family Foundation
Jon & Nancy Love

BUILDERS (\$5,000,000-\$9,999,999)

The Arrell Family Foundation
BMO Financial Group
Brookfield
Terrence Donnelly, C.M., O.Ont., LL.D. (Hon.)
The Heart & Stroke Foundation
Estate of Leona Hummel
Krembil Foundation
Arthur & Sonia Labatt
Doug & Jean Martin
The Margaret & Wallace McCain Family Foundation Inc.
RBC Foundation
The Walter and Maria Schroeder Foundation
Scotiabank
Allan Waters Family
The Geoffrey H. Wood Foundation
Anonymous

VISIONARIES (\$2,500,000-\$4,999,999)

Agnico Eagle Mines Limited
Cara Operations Limited
CIBC
Estate of Arne Bjorn & Beverley Jane Clausen
George & Kathy Dembroski
John S. Hunkin & Susan E. Crocker

Johnson & Johnson Medical Companies
Stephan R. & Sophie Lewar Trust
The R. Samuel McLaughlin Foundation
F.K. Morrow Foundation
David & Anne Patterson
Estate of Dorothy Margaret Pitts
Tim & Frances Price
SMH Department of Medicine
SMH Volunteer Association
Estate of James Drewry Stewart
Bernie & Mildred Syron
TD Bank Group
Rick & Lynne Waugh
Anonymous

FOUNDERS (\$1,000,000-\$2,499,999)

Antonietta d’Agostino-Danisi
Estate of Elizabeth Aleen Aked
The Paul Albrechtsen Foundation
AstraZeneca Canada Inc.
Estates of Helen & Maxwell Babad
The Harold E. Ballard Foundation
Lloyd & Marie Barbara
Ralph M. Barford
John M. Beck
The Bitove Family
The R.P. Bratty Charitable Foundation
Susan & Hans Brenninkmeyer
Estate of Robert Sinclair Brown
John & Mary Cassaday
Celebration of Voice
Corus Entertainment Inc.
Elizabeth A. & Richard J. Currie, O.C.
Mark & Ann Curry
Elisa Di Bartolomeo - Di Lorenzo
Bill & Robin Downe
The John C. and Sally Horsfall Eaton Foundation
The Thor E. and Nicole Eaton Family Charitable Foundation
Bill & Barbara Etherington

Estates of John & Margaret Fairlie
Roy Foss & Family
Myron & Berna Garron
Estate of Margaret Audrey Giles
Anthony R. & Helen Graham
The Jarislowsky Foundation
Colleen & Brian Johnston
Karl Storz Endoscopy Canada Ltd.
Lombard Canada Ltd.
Beth Malcolm
George E. Mara & Diane Mara
Richard & Mai-Liis McCoy
Rick & Gayle McGraw
Robert W. McRae
Theresa & Seth Mersky
Alayne & Ron Metrick
Middlefield Group
Bill Morneau & Nancy McCain
Estate of Mary N. Papantony
Power Corporation of Canada
Ewing & Faye Rae
Donald & Nita Reed
Fondation Baxter & Alma Ricard
Rotary Club of Toronto Charitable Foundation
William Joseph Rupert
The Gerald Schwartz and Heather Reisman Foundation
Sisters of St. Joseph
Ada Slight
SMH Anaesthesia Services
St. Michael’s Young Leaders
The Squires Hyland Trust
Daniel & Sandra Sullivan
Philip & Eli Taylor
Beverley & Michael Thompson
John H. Tory, Q.C. & Barbara Hackett
Peter & Louise Walter
The WB Family Foundation
Don Wright, Mus.D.
David Young, M.D.
Estate of Viola Young
Anonymous

FELLOWS (\$750,000-\$999,999)

Baxter Corporation
The Lloyd Carr-Harris Foundation
Wendy Marion Cecil
The CUMBA Charitable Foundation
IBM Canada
The Henry White Kinnear Foundation
Manulife
The E. & G. Odette Charitable Foundation
Roche Canada
Estate of Lawrence Edmund Ryan
Sanofi-Aventis
SMH Head Injury Clinic
Smith & Nephew
Anonymous

GOVERNORS (\$500,000-\$749,999)

Amgen Canada Inc.
Don & Maris Anderson
The Neil W. Baker Family
Estate of Rodney Stewart Barron
Bayer Inc.
BMO Capital Markets
Burgundy Asset Management Ltd.
Latham & Paddy Ann Burns
Marc & Helan Caira
Cameron Family Memorial
Canadian Heart Research Centre
W.C. Cheung, M.D.
CIBC World Markets
The CIBC Wood Gundy Children’s Miracle Foundation
Clear Channel Outdoor
The Clement Talbot Foundation (for the Prevention of Vascular Disease)
Jack L. Cockwell and Family
The Elizabeth & Tony Comper Foundation
CONDRAIN GROUP

Patti & Gordon Cunningham
Cystic Fibrosis Canada
Dominic & Pearl D’Alessandro
Davies Ward Phillips & Vineberg LLP
Gaetano & Giuseppina Gagliano
Deloitte
General Motors of Canada Limited
Mr. & Mrs. Len Gillis
Great West Life, London Life & Canada Life
Green Shield Canada
Joan & Clifford Hatch Foundation
Jack & Faye Hope
Jane Humphreys & Ron Lalonde
Nelson Arthur Hyland Foundation
William James
KPMG
Patricia & Roger Lace
Leon’s Furniture Limited
Loblaw Brands Limited
MasterCard Canada
Michael McCain Family
Merck Canada Inc.
Mother Parker’s Tea & Coffee Inc. & The Higgins Family
National Bank of Canada
Michael & Janet Norris
Estate of Peter L. Pelmear
The Powis Family Foundation
Estate of Willa June Ribchester
SMH Medical Imaging Consultants
St. George’s Society of Toronto
Stryker
Estate of Elizabeth Tackaberry
Frank & Maria Techar
TELUS
Estate of Betty Florence Turnbull
Thomas Vari
Yamana Gold Inc.
Anonymous (2)

OUR SIGNATURE EVENTS

URBAN ANGEL GOLF CLASSIC



Another hole in one: The 30th annual Urban Angel Golf Classic, chaired by Mike Thompson, raised more than \$1 million net in unrestricted funds for the 11th year in a row. L. Alayne Metrick, past president, St. Michael's Foundation, and Mike Thompson.

URBAN AFFAIR



The inaugural Urban Affair hosted more than 250 friends and featured a private concert with The Jim Cuddy Trio in support of St. Michael's priority needs. The event raised more than \$150,000 net. Cheque presentation: Colin Stewart, with St. Michael's Dr. Ori Rotstein, Italpasta founder and presenting sponsor Joseph Vitale, and Aldo Di Felice.

FOUNDERS RECEPTION



St. Michael's president & CEO Dr. Bob Howard recognizes St. Michael's Founders – passionate philanthropists who have invested more than \$1 million in the future of St. Michael's.

ST. MICHAEL'S YOUNG LEADERS (SMYL)

St. Michael's Young Leaders – a team of young professionals and budding philanthropists – convened on the bowling lane, dodgeball courts, golf greens, and dance floor this year to raise funds to fuel the future of health care at St. Michael's.



Members of The King Pins and Urban Angels (among others) bowl for a strike or a spare – they don't care. It's all in support of an incredible cause.



The Dodger brings corporate teams together for some team-building and healthy competition.

St. Michael's Foundation board member Greg Belton at The Bowler.



The next generation of St. Michael's philanthropists spent a day on the greens to raise funds and awareness for St. Michael's at The Duffer.



Celebrations and libations at The Giver.

TRIBUTE AND IN MEMORY GIFTS

We have received cumulative gifts of \$1,000 and more in tribute or in memory of these individuals between April 1, 2017 and March 31, 2018.

Beth L. Abramson, M.D.
Henry Ahn, M.D.
Donald Anderson
Amit Atrey, M.D.
Ray Bala
Peter A. Barreca, M.D.
Jenny Barry
Ahmed Bayoumi, M.D.
Victoria Benner
Joanne Bennett
Alan Berger, M.D.
Philip B. Berger, M.D.
Stephen D. Betschel
Aditya M. Bharatha, M.D.
Sabina Noëlle Bogler
Earl Bogoch, M.D.
William Harrison Bojda
Daniel Bonneau, M.D.
Imitiaz Boodhoo
Christine B. Brezden-Masley, M.D.
Janet Brophy-McIntyre
Cleo C. Buenafe
Marcus J. Burnstein, M.D.
Doreen J. Campbell, M.D.
Colleen Carmichael
John Carroll
Murray Chant
Mary Sarojam Cherian
Robert J. Chisholm, M.D.
Eun So Cho
David Chow, M.D.
Ida Clavelle
Laura Anne Coates
Gary F. Colter
Kim A. Connelly, M.D.
Maureen Connelly
Jean-Claude Coté
Karen M. Cross, M.D.
Michael Cusimano, M.D.
D’Wayne Da Costa
Genevieve (Genny) Kate Dalglish
Kien T. Dang, M.D.
Timothy Daniels, M.D.
Sunit Das, M.D.
Thomas Dawson
Jean Reay Day
Lorne Devine

Giuseppina Di Vizio
Maureen Elaine Dumbleton
R. Darren Dunn
Hong Duong
Larissa Derzko Dzulynsky, M.D.
Thor E. Eaton
Neil Fam, M.D.
Raymond Fantin
Gaetano Lo Faso
David H. Fitchett, M.D.
Ronen Fleishmann
Chin Fook, M.D.
Michael Freeman, M.D.
James Wilson French
Kenichi Funjii
Stephen Gaida
Fern Garner
Ralph L. George, M.D.
Louis R. Giavedoni, M.D.
Howard J. Ginsberg, M.D.
Crawford & Eve Gordon
Anthony F. Graham, M.D.
David R. Graham
Samir C. Grover, M.D.
Pamela Gruson
Neeru Gupta, M.D.
Sohanlal Gupta
Philip Bernard Gurvich
Edgardo Mayuga Herrera
H. Patrick Higgins, M.D.
Victor Hoffstein, M.D.
Aaron Hong, M.D.
Barbara A. Hooper
Martin Hulford
Robert H. Hyland, M.D.
Deborah Elaine Inglis
George Robert Jacobs
Khursheed Jeejeebhoy, M.D.
William Jeffery
Colleen Johnston
Arthur Kaminker
Gabor Kandel, M.D.
Yee Ngoot Kham
Pauline & Harry Killeavy
Ah Moy Chin Po Koi
Anna Komar
Victoria Korley, M.D.

Paul Kortan, M.D.
Rafi Kosower
Elizabeth Krehm
Michael Kutryk, M.D.
David A. Latter, M.D.
Maria Pui Ling So Lau
Clair Law
John Lederer
Susan Ledingham
Jason K. Lee, M.D.
Michael Leland & Mike Loader
Howard M. Leong-Poi, M.D.
Trieu Khe Luong
Paul Lysyk
Dharini Mahendira, M.D.
Cathy Mancini
Norman Marcon M.D.
Joseph T. Marotta, M.D.
Nicholas Martin
Jose Martins
Louis V. Matukas
Gary R. May, M.D.
Norman May
Joe Mazzaferro
Robert A. McCallum
Greg McCarney
Kieran McIntyre, M.D.
Peter McKavanagh, M.D.
Wan Mei
Alayne Metrick
Woon Jan Au Moe, M.D.
Robert Moffatt
Juan C. Monge
Rajeev Muni, M.D.
Bernard Joseph Murphy
John Thomas Murphy
Beth Naruse
Kate Nickerson
Granville Nickerson
Kenneth Pace, M.D.
Thomas G. Parker, M.D.
Albert John Pest
Antonina Pizzurro
Elan Prentice
Tariq Rafi
Joel Ray, M.D.
Gordon Sam Abram Roberts

Deborah G. Robertson, M.D.
Trevor I. Robinson, M.D.
Ori D. Rotstein, M.D.
Laurence A. Rubin, M.D.
Robert Sargeant, M.D.
Harvey Schipper, M.D.
Dorothy E. Schultz
Cecil & Phyllis Scott
Daniel Selchen, M.D.
Rajiv Shah, M.D.
Hossein Shahkarami
Rona Shapiro
Nadine Sharawy
Jean Shearer
Margaret Sherk
Yuk-Sang Shum, M.D.
Rachel Shupak, M.D.
Tello Pancrazio Siciliano
Robert David Simpson
Jasun Singh
Arthur Slutsky, M.D.
Joyce Smee
SMH Department of Cardiology

SMH Department of Emergency
SMH Department of Hematology/
Oncology
SMH Department of Obstetrics/
Gynecology
SMH Division of Nephrology
SMH Division of Urology
SMH Neuro-Trauma Unit
SMH Volunteer Services
Lynn Somers
Michael Barton Sommerville
Julian Spears, M.D.
St. Michael’s Hospital
St. Michael’s Hospital Foundation
Staff of Heart Health Unit
Robert J. Stewart, M.D.
Saul Israil Storchan
Michele Tedesco
Martina A. Trinkaus, M.D.
Jayne Tsatsaronis
Marietta Varey (Tsatsaronis)
Anna On-nor Tsang
Elizabeth Tullis, M.D.

Irene Vanek, M.D.
Subodh S. Verma, M.D.
Michail Vitopolous, M.D.
Frances Mary Watson
Jordan Weinstein, M.D.
Karla Wellington
Daniel Whelan, M.D.
Judith Wiebe
Harvey Edward Winney
David T. Wong, M.D.
Dorothy Fong-Ping Wu
Bobby Yanagawa, M.D.
Sofia Yanovski
Joe Young
Jeff S. Zaltzman, M.D.
Jerry R. Zownir, M.D.

ST. MICHAEL’S SOCIETY

People who remembered St. Michael’s Hospital Foundation in their wills or have made a gift of a life insurance policy, RRSP/RRIF or charitable remainder trust become members of our St. Michael’s Society. Those who made this commitment between April 1, 2017 and March 31, 2018 are listed here.

Their names have been added to our Donor Recognition Wall.

Gary Bowmile and Francine Fogel
Shelley L. Dolan
Margaret and William Frankovich
Sarah Knight
Afrah Gouda
Patricia Henderson
The Lourenco Family
Catherine Anne Mason
Randy D. Semmens
Janine Adamczyk Smith
John Spencer
Peter & Sheila Vandenbergk
Blake & Rita Wallace
David & Susan Willmot
Anonymous (2)

RESEARCH INNOVATION COUNCIL



Research Innovation Council members tackle test tubes and explore the inner-workings of a research lab in the Keenan Research Centre for Biomedical Science.

LEGACY OF CARING



St. Michael's Foundation board member and planned giving donor Lloyd Barbara joins Virginia Stevenson at the Foundation's Legacy of Caring event.

125-YEAR ST. MICHAEL'S PICNIC

St. Michael's Hospital celebrates its birthday – 125 years of being Toronto's Urban Angel – and our shared anniversary with Canada 150.



Catherine Hogan, program director, Perioperative Services, is flanked by Ann-Marie McLaren and Suzanne Lu, chiroprodists on the St. Michael's Wound Care team.



Members of the St. Michael's family commemorate the occasion with a photobooth keepsake.

BUILDING A HEALTHIER COMMUNITY



St. Michael's board member & Inspire 2018 Campaign Cabinet member Anthony R. Graham joins Jack Diamond, architect of the Peter Gilgan Patient Care Tower and Dr. Tony Graham, medical director, Philanthropy, St. Michael's Foundation, at an appreciation event recognizing Bondfield Construction.



Dr. Bob Howard, president and CEO, St. Michael's Hospital, L. Alayne Metrick, past president, St. Michael's Foundation and Michael Keen, executive director, chief planning and redevelopment officer, break BeaverTails with Bondfield construction workers.



John Barford, valued friend and Foundation vice chair, addresses the St. Michael's crowd.



Kristyn Wong-Tam, city councillor for the Toronto Centre-Rosedale district, congratulates Dr. Bob Howard on the hospital's memorable milestone anniversary.

OUR GENEROUS DONORS

APRIL 1, 2017 TO MARCH 31, 2018

We truly appreciate all gifts to St. Michael’s. Generous donor support in the past year has made a remarkable difference to patient care, research and education. We thank all our donors for their support. Due to space limitations, the following lists those who have made contributions of \$1,000 or more.

BUILDERS
(\$5,000,000 - \$9,999,999)
Anonymous

VISIONARIES
(\$2,500,000 - \$4,999,999)
Element Fleet Management
Peter Gilgan

FOUNDERS
(\$1,000,000 - \$2,499,999)
Estate of Mary N. Papantony
Ewing & Faye Rae
The Walter and Maria Schroeder Foundation
The Slight Family Foundation
Estate of James Drewry Stewart

FELLOWS
(\$750,000 - \$999,999)
Brookfield

GOVERNORS
(\$500,000 - \$749,999)
The Arrell Family Foundation
John & Jocelyn Barford Family Foundation
BMO Financial Group
George & Kathy Dembroski
Estate of Margaret Audrey Giles
The Heart and Stroke Foundation
Richard & Mai-Liis McCoy
Estate of Willa June Ribchester
Bernie & Mildred Syron

BENEFACTORS
(\$250,000 - \$499,999)
Lloyd & Marie Barbara
CIBC
Bill & Robin Downe
The John C. and Sally Horsfall Eaton Foundation
Myron & Berna Garron
Jon & Nancy Love
Beth Malcolm
Theresa & Seth Mersky
Tim & Frances Price

RBC Foundation
Donald & Nita Reed
Philip & Eli Taylor
TD Bank Group
Rick & Lynne Waugh
The WB Family Foundation

PATRONS
(\$100,000 - \$249,999)
The Paul Albrechtsen Foundation
Rose Baker & Paul Reilly
John M. Beck & Diane Francis
The Bitove Family
M. Paul Bloom and Family
BMO Capital Markets
John & Mary Cassaday
Anton & Birte V. Chlumecky-Bauer
Jack L. Cockwell and Family
The Elizabeth & Tony Comper Foundation
Corus Entertainment
Cystic Fibrosis Canada
Deloitte
Bill & Barbara Etherington
Anthony R. & Helen Graham
William & Linda Hechter
Honeywell Limited
Jack & Faye Hope
Estate of Gordon Stephen Ing
Colleen & Brian Johnston
Patrick & Barbara Keenan and Family
Michael Leland & Mike Loader
The Maxwell and Ruth Leroy Foundation
Michael McCain Family
Rick & Gayle McGraw
Middlefield Group
Bruce & Vladka Mitchell
Bill Morneau & Nancy McCain
Patrick Newton & Family
Louis L. Odette & Family
The Gerald Schwartz and Heather Reisman Foundation
Scotiabank
Ada Slight
TD Securities Underwriting Hope Fund
Frank & Maria Techar

John H. Tory, Q.C. & Barbara Hackett
Robert & Bonnie Vistorino
Blake & Rita Wallace
Anonymous

COMPANIONS
(\$50,000 - \$99,999)
Hyman & Phyllis Ackerman
The Harold E. Ballard Foundation
Gregory & Susannah Belton
Ronald & Barbara Besse
Brain Matters Brain Cancer Charity
Hans & Susan Brenninkmeyer
Canadian Tire Corporation Limited
CGI Group Inc.
Jenny Coco
William & Nina Coco
Bea Crawford and Family
Davies Ward Phillips & Vineberg LLP
Robin Deverteuil Foundation
Peter J. Devine
The Dunin Foundation
The Catherine and Fredrik Eaton Charitable Foundation
In Memory of Seiji Fujiwara
Gordon & Patricia Gray
Ken Hugessen & Jennifer Connolly
Jane Humphreys & Ron Lalonde
John S. Hunkin & Susan E. Crocker
Intact Insurance Foundation
Canada Microsurgical
The Jarislowsky Foundation
Killam Apartment REIT
KPMG
Krembil Foundation
Patricia & Roger Lace
Leon’s Furniture Limited
Mackenzie Financial Corporation
MasterCard Canada
The Margaret & Wallace McCain Family Foundation Inc.
National Bank of Canada
Sherri & Derek Neldner
Gordon & Janet Nixon
Michael & Janet Norris
Pace Family Foundation

Barbara Palk & John Warwick
The Powis Family Foundation
RBC Capital Markets
Rogers Communications Inc.
Rom-Grand Land Ltd.
Rotary Club of Toronto Charitable Foundation
Estate of Joseph Rupert
Wiliam Seegmiller
Estate of Audrey Frances Somerville
Stryker
Daniel & Sandra Sullivan
Tech Mahindra Limited
TELUS
Beverley & Michael Thompson / OAS
Times Group Corporation
Viner & Begg Family
Anonymous (2)

CHAMPIONS
(\$25,000- \$49,999)
2292540 Ontario Inc.
Clarke Addison
Aird & Berlis LLP
Soham & Shaila Ajmera
Alexandra & James Arnett
The Neil W. Baker Family
Bayer Inc.
Adam Beder & Lindsey Freedman-Beder
Surjit & Bibi Bhalla
E.W. Bickle Foundation
Bruce & Josephine Bird and Family
Bond Brand Loyalty
Chris Bournakas
Broadridge Financial Solutions
Burgundy Asset Management Ltd.
Bill Butt & Susan Quigley
Cadillac Fairview Corporation Limited
The Lloyd Carr-Harris Foundation
Carsons Industries Group
Caskey Francis Family
Cineplex
CompuCom
Concord Adex Inc.
Connor, Clark & Lunn Foundation
Cossette
Cotton Candy Inc.
David Crawford & Julia Holland
The CUMBA Charitable Foundation (Jon & Patricia Johnson)
The Peter Cundill Foundation
Mark & Ann Curry
Delmeade Construction Ltd.
The Dilawri Foundation
Al & Paula Donald

The John David & Signy Eaton Foundation
The Thor E. and Nicole Eaton Family Charitable Foundation
ECN Capital Corp.
Empire Communities
Ernst & Young LLP
The Fenella Foundation
Finastra
The Steve and Mary Gaida Foundation
Mr. & Mrs. Len Gillis
GMD Pharma Solutions / Ophthalmic Direct
Elizabeth Godin
Linda & Tom Goldspink
Gordon Ross Medical Foundation
Crawford & Eve Gordon
Guild Electric Charitable Foundation
M. Elaine Hamilton
Richard & Gwen Harvey
Joan & Clifford Hatch Foundation
Haynes-Connell Foundation
Estate of Gail Hutchison
Nelson Arthur Hyland Foundation
IBM Canada
Intersport
Estate of Peter John Janetos
JDL Development Limited
Arthur & Claire Jobin
Donald K. Johnson, O.C.
K-Bro Linen Systems
KingSett Capital
Estate of Patricia Shirley
Agnes Kirkland
Labatt Breweries of Canada
Allen and Marion Lambert
Lenczner Slaght Royce Smith Griffin LLP
Loblaw Brands Limited
Longo’s Family Charitable Foundation
Robert & Margaret MacLellan
Nancy E. A. Main
Gordon J. & Beverley Manion
John Manning & Yahphen
Yvonne Chang
McCarthy Tétrault LLP
Estate of David Shaw McDowell
Blair & Kathy McKeil
Shawn McReynolds & Elaine Kierans
Ted & Julie Medland
Lisa & Matthew Melchior
Menkes
Morkos Family
Morneau Shepell
Estate of Terence Hamm Murphree
Granville Hubert Nickerson
Orlando Corporation

Estate of Katherine Elizabeth Beryl O’Shea
Charles Petersen & Riki Turofsky
The Honourable David Peterson & Shelley Peterson
Pfaff Automotive Partners
PIMCO Canada Corporation
Alan D. Plaxton
Estate of Margaret Catherine Pucet
William & Linda Quinn
Carol and Morton Rapp Foundation
Eamon & Lynda Ryan
William & Meredith Saunderson
Siemens Canada Ltd.
Helen Sinclair & Paul Cantor
Harcharan & Prem Singh
Smith & Nephew
Sprott Inc.
Stelios Philanthropic Foundation
David Stevenson
The Stollery Group
TD Securities Inc.
Tesari Charitable Foundation
Richard & Heather Thomson
Richard & Judy Thorpe
Tridel Corporation
Valleydene Corporation Limited
Peter & Sheila Vandenberk
Visa Canada Corporation
Joseph Vitale / Italpasta Limited
Peter & Louise Walter
Westdale Properties
Dr. Frank Wong & Juliana Wong
The Woodbridge Company Limited
Anonymous (4)

PARTNERS
(\$10,000 - \$24,999)
Accenture
Aecon Group Inc.
AGF Management Limited
Air Canada
John Albright
Angus Glen Golf Club & Conference Centre
Malcolm & Robin Anthony
Carol & David Appel
James Appel
Yveline Audemars & Humberto Rivero
Bain & Company
William O. S. Ballard
Edith Bansen
Lorne & Rosemary Barclay
Barrick Gold Corporation
Bay Cardiac Diagnostic Inc.
Beck Taxi Ltd.

Bell Canada	David & Elizabeth Esposito	Joe Mazzocco & Pauline Kutnjak	Jennifer Beck, M.D.	Andrew Advani, M.D.	Bass Associates Professional Corporation
Bensimon Byrne Inc.	Robert & Nancy Evans	Wes & Sarah McComb	SMH Department of Anaesthesia	Mahsa Afghahi	Marian C. Bassett
Bill & Dawne Benson	Facebook Canada	Sue & James McPhedran	SMH Department of Medicine	Kamran Ahmad, M.D.	Marion G. Bassett
Norma & Larry Bertuzzi	Agnes Faraci	The Lillian Meighen and Don Wright Foundation	SMH Department of Obstetrics/ Gynecology	Jonathan Ailon, M.D.	Jeff Batchelor
Beutel, Goodman & Company Limited	W.R. & Gail Farquharson	Vincent Mercier & Kirsten Halpin	SMH Department of Pediatrics	Aimia Inc.	Catherine Bateman
The Biggar-Hedges Foundation	FCB Toronto	Metrus Properties Limited	SMH Department of Surgery	Gwendoline Olive Albert	Patricia Bauer
Birch Hill Equity Partners	Terry Fryett	Noella & Chris Milne	SMH Division of Neurosurgery	Joni Alexander	Nancy Baxter, M.D.
Nancy Bird & Family	Helen & Paul Gareau	Joseph Mimran & Associates	SMH Emergency Physicians	Mary Ann Alexander	Peter & Teresa Baxter
Blake, Cassels & Graydon LLP	Narinder Kumar Garg Medicine Professional Corporation	Florence Minz	SMH Medical Imaging Consultants	Abdul Al-Hesayen, M.D.	Ahmed Bayoumi, M.D.
Max & Yetta Bluestein & Will Karpel	Robert & Juliette Gibbons	MKTG Canada Corp	The Sam Sorbara Charitable Foundation	Lynda J. Allcock	Christina Beatty
BMO Nesbitt Burns Inc.	Mehramat & Satwant Gill	MMSL Charitable Foundation	Karen Soupcoff	Allen Family Foundation	Robert & Sharron Beder
Bondfield Construction Company Limited	Marianne E. Girling	Gordon W. Moe, M.D.	Spencer Stuart & Associates (Canada) Ltd.	Ianthe S. Alleyne	Kaye & Paul Beeston
Borden Ladner Gervais LLP	Michele Goddard	Paul Molinaro	G. Wayne Squibb	Almada Inc.	Oscar Belaiche & Cheryl Bozynski
Patrick G. Bradley	Estate of Joseph Gorog	Joe Natale & Melissa Martin	St. Joseph Communications	Paul Alofs	Donald & Nadine Bell
Maria C. Buenafe	Tim & Darka Griffin	Navigator Limited	Wilfred M. Steinberg, M.D.	Rupert Altschuler	Terry Bell
Canadian Dealer Lease Services Inc.	Paul G. Griffiths, Jr.	Nexus Investment Management Inc.	Kate & John Stevenson	Richard Alway	Anthony Bellicoso
L. Louise Cannon	Groundlayer Capital Inc.	Niagara Casino	Colin & Julia Stewart	Keith Ambtman	Vivian Bellisario
Angelo & Maria Gwen Caputo	Doug Guzman, Sheila Brown & Family	Northwest Nuclear Imaging Limited	Stikeman Elliott	Amexon Property Management Inc.	Dalisay I. Benedicto
Keith & Joanne Carrigan	The Halahel Family	O.N. Site Construction Inc.	Mark Stringer	Anju Anand, M.D.	Luningning Benedicto
Carson Industries Group	Mindy & Michael Handler	Estate of Frances Joan Ogletree	Telelatino Network Inc.	Forbes N. Andersen	Paul Bennett & Catherine Olsen
Wendy Marion Cecil	Stuart & Aurelia Hensman	Tom & Susan O'Neill	Ivor & Kristine Thompson	Anderson Family Foundation	Robin Bennett
Cerner Canada Ltd.	Paul Higgins	Osler, Hoskin & Harcourt LLP	ThoughtWire Corporation	Estate of Florence Anderson	William & Judy Benson
CGOV Asset Management	Hillsdale Investment Management Inc.	Ove Brand I Design	TorQuest Partners	Paul Angaran, M.D.	Eric & Marlies Berg
James D. Church	Philip Ho	The Pannek Baier Family	Torys LLP	Sekhar Angepat	Yvonne Bergmans, M.D.
Joseph Cipelli	Robert J. Howard, M.D. & Brenda McDowell, M.D.	J.E. Panneton Family Foundation	Sheila Waengler	David M. Antebi	Joseph Berta
Cisco Systems Canada Limited	HSBC Bank Canada	David & Anne Patterson	Nicholas Walker	Mark & Gail Appel	Roland & Marie Bertin
Lorraine Clarfield	Investments and Technical Management Corp.	Helen McCrea Peacock Foundation	Estate of Jane Kyle Wells - Jane Wells Sister Trust	Kelly Appleyard	Kilian Berz & Katharine Lake Berz
Stephen K. Clements & Diane Stevenson	Ellis Jacob	Petels Corporation	Estate of Christine Margaret Whatmore	Hideko Arai	Marianna Betto
The Lucia Colavita Foundation	Ron James	The Pew Family	Darryl & Cassandra White	Arbitration Place	Stephen Betschel, M.D.
Computer Room Services Corporation	William James	Phamous Characters Inc.	Jilla & Robert Williams Foundation	Robert Arbuthnot	BEX Engineering Limited
The Condo Store Realty Inc.	JC Clark Ltd.	Rose Pirri	Jane M. Wilson	Marion Armstrong Charitable Foundation	Laila Bhullar
Sante Corona	Jones Lang Lasalle Real Estate	PricewaterhouseCoopers	Winberg Foundation	Foundation	Steven Biancaniello
Estate of Elizabeth Crawford	Urban Joseph, O.C. & Lucille Joseph	The Rafi Family	The Family of Harvard Edward Winney	R. Brock Armstrong	Mark Binstock & Marilyn Carey-Binstock
Bob & Gayle Cronin	Stuart Kedwell & Dr. Candice Holmes	William Read	Eldon Arthur Winsor	Robin L. Armstrong	Frank Robert Bird
Tom & Bev Cryer	Martin W. Kelman	Carl Renzoni	Petra & Albert Wu	Stephen V. Arnold	Gwen Bird & Family
Patti & Gordon Cunningham	Susan Kendall	Michael Rolland	Zanchin Automotive Group	AssessMed Inc.	Linda Bird & Family
Cushman & Wakefield Ltd.	Melenda Lam	Barrie D. Rose, Karen Solomon and Family	Zimmer Biomet	Dan & Mary-Jo Atkinson	Ethel M. Birkenshaw
The Dalglish Family Foundation	Lax O'Sullivan Lisus Gottlieb LLP	Ori D. Rotstein, M.D.	Maria L. Zorzitto, M.D.	Bryan Au, M.D.	BlackRock Asset Management Canada Limited
Davies Ward Phillips & Vineberg LLP	Terrence & Mari Josette Leon	Bryan & Elizabeth Rowntree	Zukerman Family Foundation	Audico Services Limited Partnership	Mary T. (Terry) Blair
Brian Davis	Lerners LLP	RP Investment Advisors LP	Anonymous (7)	Bacchus & Barley	Susan Blanchard
DealerTrack Canada	Liberty Development	RPM Technologies	LEADERS (\$1,000 - \$9,999)	Akshay Bagai	David L. Blenkhorn
Alan Dean & Kathy Kinnear	Donald R. Lindsay	Scarsin Corporation	1416608 Ontario Inc.	Bailey Metal Products Ltd.	Jerry Bliley
Jane Deighton & Jean Coté	Anthony Lisanti	Robert Shapiro	1524732 Ontario Ltd.	Jeffrey P. Baker, M.D.	Eric & Jodi Block
William S. & Ann P. Deluce	Jeffrey C. Lozon & Donna Doherty Lozon	Rona & Harold Shapiro	1857305 Ontario Inc. - Centro Square	Geraldine Ball	Eric Blokzyl
Dentons	D. Edward Macklin	Eleanor & Gerald Shear	A & E Optical Inc.	Reed Ballon	William & Monique Blundell
Diamond and Schmitt Architects Incorporated	Michael J. Mahoney	Donna & Stanley Shenkman	Beth Abramson, M.D.	Ernest Balmer	BNY Mellon Wealth Advisory Services
Frederick and Douglas Dickson Memorial Foundation	Manulife Financial	Arnold Shniffer	Abundance Canada	Bedros H. Bambokian	
Keith Dill & Family	Cynthia and Brett Marchand	John G. Shuter	Accessible Daily Living	Mona H. Bandeen	
Discount Car and Truck Rentals	Stephen Marshall & Jill Denham	Silver Hotel Group and Bond Place Hotel	Acier Wirth Steel	Drs. G. Bandiera & J. Ringash	
The Dreaming Tree Wines	Estate of Lillian Jeanne Mathieson	Sandra Simpson	Carolyn Acker & David W. Kinnear	Lynn Barber	
Susan Eplett & Jim Walker	Mawer Investment Management Ltd.	Doug & Paula Sinclair	George N. Addy	Bruce C. Barker	
		Christer Sinderby, M.D. &		Barney River	
				Andrew W. Barnicke	
				Joyce Barr	
				Wayne & Kim Barwise	

Boehringer Ingelheim Canada Limited	Canadian Mortgage Capital Corporation	Terence & Maria Collier	Emanuel & Elsa Di Falco	Evangeline Ferrer	Marilyn and David Gluskin Fund
Stefanie & Al Boesch	Cardiac Care Classic	Colliers International	Elizabeth Dilworth	Fidelity Investments	Rahat Godil
Thomas A. Bogart & Kathryn Tamaki	Charles John Canning	Robert M. Colliver	Ivayla Dingilova	Fiera Foods Company	Jeannette Goguen, M.D.
Howard Bogler	Can-Ross Environmental Services Ltd.	Collyer Benson Capital Inc.	Sebastian Distefano	William & Rosemary Fillmore	Michael & Nancy Goldberg
The Boiler Inspection and Insurance Company of Canada	Edge & Mary Caravaggio	Colonia Treuhand Ltd.	Rick & Leigh Dobson	George Fine	Louise & Mark Golding
Roger Boire	Hanne Card	James & Cindy Colvin	Leonard Dodds	Paula Fine	The George and Kay Goldlist Family Foundation
Drew Bojda	Donald A. Carmichael	Complex Injury Rehab Inc.	Sharon Doi	Laurence & Vera Finkelstein	Marie E. Goldthorpe
Gilbert Boland	John & Barbara Carroll	Sharon Comstock	Dole Packaged Foods LLC	Bob Finlay	GoodHope Management Ltd.
M. Boodhoo	Mary Louise Carter	William A. Connacher	Dominican Friars of Toronto	Anthony Firmin	Shaun Goodman, M.D. & Family
George L. Booth	Michael Case	Kim Connelly, M.D.	Catharine Doncaster	Janice Fischer	Goodmans LLP
Gillian L. Booth, M.D.	Catastrophic Injury Management Inc.	Mark Q. Connelly	Paul Dorian, M.D.	Pamela J. Fisher	Matthew Gottlieb Professional Corporation
Angela Borgo	Bruno Cavion	Gerald & Carla Connor	Dorsay (Pickering) Ltd.	David Fitchett, M.D.	Kevin Gough, M.D.
Elspeth Bowler	Martine A. Celej	Marilyn Cook	Claudia Dos Santos, M.D.	Mary Fitzgerald	John & Patricia Gouinlock
Michael & Lisa Boyd	Amanda Ceniti	John Coombs	Ronald & Lynda Douglas	Garry & Madelon Fitzpatrick	Robert & Janet Gouinlock
Harold H. Braaksma	Salvatore Cerundolo	Cooper Mediation Inc.	Trenton W. Douglas	Jeremy Fleming & Irene Gilligan	Suzanne Gourley
Giovanni & Raffaella Bragagnolo	CGC Inc.	Barry & Susanne Cooper	Vera Dounaevskaia, M.D.	Rachel & Ken Flood	Marie Gove
Nicholas Brearton	Ben & Joyce Chan	David J. Cooper	Steven Douville	Michael Flux & Marnie Smith	Katherine M. Govier
John & Carol Breen	David K. Chan, M.D.	Heather Cornwell	Ken & Sheryl Dowd	Ignatius W. Fong, M.D.	Anthony F. Graham, C.M., M.D.
Philip Brent	Helen Chan	Abraham Costin	Greg Dowdall	Nicholas & Sally Forrest	John Graham, M.D.
Peter & Barbara Brewster	Linda Chan	Diane & Gary Cotton	Ashley Downey	Michael Forsayeth	Margaret H. Graham
Christine Brezden-Masley, M.D.	Choi Ngor Chang	Court Holdings Limited	John E. & Jane Downs	Gordon Fowler	Angela E. Gransden
Dr. David & Constance Briant	Deborah Chant	Robert & Phyllis Couzin	H.W. Osmond Doyle	George & Susan Fowlie	Brock & Elsie Grant
Bridgepoint Financial Services Inc.	Gordon Chaplin	David Cowan	Johnnie Drain	Terry Fox	Gordana & Milan Graovac
William & Arden Broadhurst	Chater Investments (1996) Limited	James Cowan	Drivelab Inc.	Juliet Franczyk, M.D.	Ishbel Grauer
Laurent Brochard, M.D.	Shang Yi Chen	Janis Elizabeth Crewson	James W. Dufton	Diane Frank	Alex Gray
Elizabeth Broden	Joe & Vincenta Cheng	Myra Cridland	Robert Dunigan	Margaret Franklin	James Gray
Rick & Priscilla Brooks-Hill	Peter Ka Wah Cheng	Mary & John Crocker	The Dunkley Charitable Foundation	Norman Fraser	Jennifer Gray
Dorothy Brophy	James Justin Cherian	Michael Cruickshank	Margaret Dunn	Wayne D. Fraser	Great West Life, London Life and Canada Life
Douglas Brown	Connie Chiang	Joseph & Kelly Cundar	Valerie A.E. Dyer	Christine M. French	Vincenzo Greco
Janet Brown & David Swain	Vincent Chien, M.D.	Kathleen Cuneo	E.B. Rich Research	Wendy French	The Lindy Green Family Charitable Foundation
Marion Brown	Robert & Virginia Chisholm	Edward Curran	Graeme M. Eadie	Joseph Frieberg	Laurie Green, M.D.
David A. Browne	Heather Y. Choi	Cutting Edge Paper Ltd.	Jeremy M. Edwards, M.D.	Jan O. Friedrich, M.D.	John H. Greenhough
Edward & Heather Bryant	Sunae Choi	Gregory Da Costa	Mustapha Elalaoui	Linda Frum	Ralph Gregorz
Malcolm & Donna Bryce	Chi-Ming Chow, M.D.	Michelle Dalcourt	Diane Eley	Anne Fry	Griggs Family Foundation
Buchner Manufacturing Inc.	John Chow	Andrew Dalglish	Paula Elliott	Functionability Rehabilitation Services Inc.	Mary Rita Grimshaw
Lynn Buckle	Marcus Chow	Louise V. D'Andrea	Emerald Foundation	G.K. Associates & Construction Inc.	Samir C. Grover, M.D.
Donald F. Buckley	Paul Christiani	Lang T. Dang	Jean Emond	Ajit Gahunia	Claude Grunfelder
Chris Buller, M.D.	David Christie	Edgar & Patricia Daniels	Equitable Bank	Linda Galessiere	Paul Guinane
Malcolm E. Burford	Dennis J. Christopolous	Lloyd Darlington	Peter R. Erlendson	Jack Gallagher	Richard Gummer
John Burgman	Chubb Insurance Company of Canada	Douglas Davis	Ivan Eryavec	James Gannon	Dr. Rajesh & Sonia Gupta
Burgundy Asset Management	Peter Chubb	Joseph Day	Doone & George Estey	Gap (Canada) Inc.	Samir Gupta, M.D.
Dorothy Burke	Dae-Gyun Chung, M.D.	Luigino & Antonia De Faveri	Graham Evanoff	Adoracion S. Garcia	June Gurvich
Michael Burke	Roberto Ciasca	Lorenzo De Marchi	Evelyn and Kurt Charitable Foundation	Isidro & Marta Garcia	John Hadley, M.D.
Michael A. Burke	Citrolad Canada (Juices) Inc.	Elvio & Vicki De Meneghi	Paul Evraire	Heather Gardiner	Masud Hakim
Paddy Ann Burns	John & Lynn Clappison	Lino A. De Souza	John Ewing	Michael Garmaise	David Hall, M.D.
June Burrowes	John K. Clark	John Deacon	E. Arthur Faint	Rick & Mindy Gelman	John E. Hall
Fay Burton	Ann Clavelle	John & Margaret Deeks	The Fairley Family Foundation	Gerdau Long Steel North America	Supt. Lorne E. Hall, RCMP (Ret'd.)
Stewart & Gina Burton	Hazel Claxton	Patricia A. DeGeer	Neil Fam, M.D.	Gibraltar Solutions	Mitchell L. Halperin, M.D.
Pushpa Butani	John & Pattie Cleghorn and Family	Dell EMC Canada	Marie E. Faughnan, M.D.	Robert Gibson	Gabrielle S. Hamilton
Khalida Butt	Rosa Clementino & Tercio Dias	Helen and Philip Delman Foundation	David B. Feather	Edward Gilbert	Margaret L. Hamilton McCabe
George & Martha Butterfield	Terence & Margaret Coates	Daniel T. Denomme	Harry Feldman, Robert Feldman and Eunice Feldman	Richard Gilbert, M.D.	Paul Hanley
Cable Ready Systems Ltd.	Jamie Coatsworth	Douglas & Margaret Derry	Fengate Real Asset Investments	Harold & Joyce Giles	Rashida Haq, M.D.
Estate of Elvera Florence Campbell	Judith & Marshall Cohen	Tammie DeRush	Jordan Fenn	Mary A. Gillespie	
	Richard Coles	Nasim Dhalla	Robert Fenn	Gluckstein & Associates LLP	
	Cynthia Collantes	Ian Dick	Peter & Catherine Ferren	Jim Gluftsis	
		Jeremy S. Dietrich			

Tim Hardie	Integra Health Centre Inc.	Michael Klubal & Karen Leonard	Fok-Han Leung, M.D.	Estate of Mary Theresa Markell	Michael Bros. Excavating
Ziv Harel	Isberg Charitable Trust	Holger & Claudette Kluge	Nancy W. P. Leung	Philip A. Marsden, M.D.	Gyl Midroni, M.D.
Judy Harquail	Margaret Istona	Michael & Sonja Koerner	Richard Leung, M.D.	Eileen Marsh	Robert J. Millar
Diane Hart	Bill Ito	Julie Kong	Roger S. K. Leung	Patricia Marsh	Miller Bernstein LLP
Mr. & Mrs. D.J. Hartnett	J.A. Austin Associates Ltd.	Betty K. Koo, M.D.	Vince Leung	Martin Merry & Reid Limited	Stanley Mintz
Alex Harvey	Jackman Foundation	Peter & Ine Koonings	Susan G. Lévesque	Evelyn E. Martin	Sarrah Mirza
Wan Yau Hau	Darwin & Renetta James	Victoria Korley, M.D.	Stephen & Marcy Levinson	Robert & Patricia Martin	Sharmistha Mishra, M.D.
Doreen M. Haveman	Trevor W. Jamieson	Paul Kortan, M.D.	Wendy Levinson, M.D.	Maria Martins	Robert & Barbara Moffatt
Michael Heaton	Eric Janitis	Judy & Carl Korte	Steven Levy, Ph.D & Michelle De Los Santos	Ronald A. Masleck	Juan Carlos Monge, M.D.
Caroline Helbronner	Fikreta Jayasekera	Robert S. Kranjec	LexCloud.ca Corporation	Robert Mason	Edward J. Mooney
George & Linda Heller	Robert C. Jefferies	Zenta L. Krastins	Christopher K. Li, M.D.	Jitendra Mathur	Carol Moore
Henderson Structured Settlements LP	Lisa Jeffrey	In memory of Elizabeth Krehm	Karen Li	Irving Matlow	Ian P. Morrison
William Henderson	Paul Jelec	KRG Children's Charitable Foundation	Kenneth Librot	The Mauro Family Foundation Inc.	Robert Morrow
Gail D. Hendrie & Anthony O. Hendrie	Owen Jenkins	Sunil Kumar	Galit Liffshiz and Associates Inc.	Gary R. May, M.D.	Heather Mort
Marc Henein	Ole Jensen	Sonny Kushwaha	David Lim, M.D.	Guiseppe Mazzaferro	Jeffrey Mosko, M.D.
Mary-Eleanor Henley	C. Dawn Jetten	Michael Kutryk, M.D.	Sid & Janet Lindsay	Michael Mazzuca	Ophyr Mourad, M.D.
The Maurice & Irma Hibbard Family Charitable Fund	The Norman & Margaret Jewison Charitable Foundation	Eugenia Kuzmanovic	Jeffrey Lipton, M.D.	Dugald McArthur	Mitze Mourinho
Lisa Hicks, M.D.	Jimmy Devellano Children's Foundation	Ivy Kwok	Lili & Jeff Litwin	John McBoyle	Michael Moyer
Brian P. Higgins	JK Group Inc.	Claire O. Kyle	Peter Liu	Patrick F. McBrien	Matthew Muller, M.D.
Sara Hill	Michelle John	Susan Kyle	Kevin Lo	Ann McCain	The Peter and Melanie Munk Charitable Foundation
Donald W. Hillhouse	Mary Margaret Johnson	Ignazio La Delfa, M.D.	Chris Lobbezoo	Linda M. McCain	Alexandra Murphy
Himelfarb Proszanski LLP	Yvonne Johnston	Alice Lai-Ma	Suzanne Lobbezoo	Thomas McCarthy	Conor Murphy
Simon E. Hirsch	Jones Brown Inc.	John Lambing	The Frank and Azniv Lochan Family Foundation	Jeanette McDonald	In memory of John Murphy
Gloria W. Ho	Dr. Robert & Ruth Josephson	Lorraine & Claude Lamoureux	Deborah Locke	Lorna McDougall	S.R. Murphy
Karen Ho	Robert G. Josse, M.D.	Mark Lamoureux	Peter Lockie	Elda L. McDowell	Laurence Murray
Victor Hoffstein, M.D.	Elise S. Kalles	Tony Landry	Elizabeth Logan	Philip McFarlane, M.D.	Mary Murray
Marika J. Hohol, M.D.	Kamel S. Kamel, M.D.	Paul Langston	Longford International Ltd.	Sandra G. McGuire	Julie Y. Naruse
Kathleen Holliday	Gabor Kandel, M.D.	Richard Laprairie	Ivy Lai Haw Looi	Barry & Rose McInerney	Julie Nazareth
Peter Hollidge	Joseph J. Kaposi	Christopher Lattanzi	Estate of Karen Denise Lothian	Kieran McIntyre	James Neill
Marion V. Holmes	Estate of Athanasios Karamanos	David A. Latter, M.D.	Idalyn Louis	McKellar Structured Settlements Inc.	Neinstein & Associates LLP
R. John D'A Honey, M.D.	Pierre & Mariel Karch	John Lau	Lumira Capital Investment Management Inc.	Elizabeth M. Mckeown, M.D.	Gary Nevison
Aaron Hong, M.D.	Charles Kassardjian, M.D.	Craig Lauder & Jane Cooke-Lauder	Lundbeck Canada Inc.	James Mckergow	W. Douglas & Janet Newlands
Robert Hope	Thomas Kaul, M.D.	Andreas Laupacis, M.D.	Hang Luong	Ian McKinnon	Erone Newman
Martin J. Horak, M.D.	Jack Kay	Patrick Lavelle	Paul Lysyk	John & Katherine McLaughlin	Shwe-Tsang Ng
Patrick & Andrea Horan	Andreas & Evridiki Kazas	Adrienne Law	Melody Ma	Kenneth McLaughlin	Bernardine Ngan & Daniel Lee
Tyler J. Howard	Father Edward Keays	John Law	Lilias M. MacDonald	Mona McManus	Jenny Ngo
Janice Lynne Howe	Mary Jane Kelley	Le Goyeau Holdings Ltd.	Rory MacDonald	Sydney McMorran	Ian Noble
Howie, Sacks & Henry LLP	Burton & Dawn Kellock	Nancy C. Leclerc	Charles Macfarlane	Dianne M. McNeil	Michael Nobrega
HUB International HKMB	P. Anna Kempff	Alexander Lederman	Tim D. Macklaier	Susan McNeil	Edward & Joan Norris
William P. Hudd	David & Mary Kent	Darren Lee	Macquarie Infrastructure and Real Assets	John & Susan McNeil	Northleaf Capital Partners Ltd.
Robert & Caroline Hughey	Edward & Ann Kerwin	H. Douglas & M. Olivia Lee	Dharini Mahendira, M.D.	Jeff McRae Professional Corporation	Sharon O'Connell
Estate of Martin Hulford	Jacques Khammar	Karen K. Lee, M.D.	Jonathan Maier	Medike Branding Solutions	Paul O'Connor Funeral Home Ltd.
Hull Life Ltd.	Kamran Khan, M.D.	Michelle Y. Lee	A. Peter Maika	James & Ria Meenan	Mr. & Mrs. Paul H. O'Donoghue
Steve Hummel	Valli Kichodhan	Ronita Lee, M.D.	Main Drug Mart	Roy & Barbara Megarry	The Honourable John O'Driscoll
Basil & Nancy Hunter	Kalina Kim	Warren Lee, M.D.	Samuel G. Majic	Philip Mejia	Nicholas Offord
Stephen W. Hwang, M.D.	Young-In Kim, M.D.	Yuna Lee, M.D.	Sally Pick C. Man	Lorne & Norma Melara	Georgina Alanne O'Gallagher
Robert H. Hyland, M.D.	David C. King Limited	Marc Leger	Iqwal Mangat, M.D.	Pat & Michelle Meneley	John & Joyce Ogden
IBK Capital Corp.	Diana King	Lawrence A. Leiter, M.D.	Lili Manson	Jamie & Sophie Merbaum	Jiwon Oh, M.D.
IBM Canada Ltd. Employees Charitable Fund	Nancy King	Constance L. Leon	Maple Leaf Sports & Entertainment Ltd.	Patrice Merrin	Catherine O'May
Teresa Ierullo	Simon J. Kingsley, M.D.	Mary Ann Leon	Anthony Marano	Alayne & Ron Metrick	Onex Corporation
In Accessories	William & Barbara Kinnear	Robert S. Leon	Alan R. Marchment	Metro Toronto Chinese Golden Age Society	OPG Employees' and Pensioners' Charity Trust Fund
Lisa Inacio	Leanne Kipfer	Howard Leong-Poi, M.D.	Norman Marcon, M.D.	Metropolitan Plumbing and Heating Contractors Association	Marvin Oppen
John R. Ing	Robert Kitchen	Marcel & Lyne Leroux			Kerry O'Reilly Wilks & Lloyd Wilks
	James Kitchens, M.D.	Patrick Leslie			
	David Klein, M.D.	Brad Leufkens			
		Albert Leung, M.D.			

Julia L. Overs
Alex Packman
Valerie L. Palda, M.D.
Rocco & Antonietta Palmieri
Victor & Naomi Pamensky
Tony Pampena
Filip Papich
Paradigm Capital
Dr. Thomas and
Mrs. Joanne Parker
James M. Parks
James and Alfreda Parlee Fund
Marjorie Paterson
Reena Pattani, M.D.
The Jim Pattison Foundation
Pavenski TTP Research Fund
Robert Peake
William D. Peckford
Charles Peebles
John Peers
Lawrence Pentland
Jeffrey Perl, M.D.
Persistence Capital
John F. (Jack) Petch, Q.C.
Esther Peters
Camille Petitjean
Tony Petricca
Douglas Pezzack
Suzanne Pichosky
Otto and Marie Pick Charitable
Foundation
David Pidduck
Estate of Peter Waymouth Pinkham
Arnold Pintér, M.D.
Judith Poe
Dale Ponder & Jon Venutti
Mary Jean Potter
Francis W. Powell
Ramesh Prasad, MBBS
John A. Prentice
Marian Press
Ian Preston
Barbara D. Price-Wallace
Andrew & Valerie Pringle
William Pringle
Pringle Portfolio
Management Group
Prizsm Public Affairs Inc.
Louis Probst
Thomas Quinn
Edward Ra
Greta Rabinowitz
Rudolf & Madeline Radics
Enzo Ragno
Gordon Rahme
Jody & Chris Rathgeber

Joel Ray, M.D.
Raymond James Foundation
Fahad Razak, M.D.
June Redhead
Rehab First Inc.
Thomas & Mary Reid
Joseph Reiss
Estate of Alice J. Richards
David Richardson
Alexander & Shirley Richman
Judi Richter-Jacobs Foundation
Samuel Rickett
James M. Ritchie
Bruce Robertson
Jack Robertson
Ranga Robinson, M.D.
Rosanne T. Rocchi
Caroline Roe
Simon A. Romano
Emmeline Roodenburg
Joseph F. Rooney
Rex H. Rose
Andrea S. Rosen
Lawrence Rosen
Ruth Ross
Daniel Rossetti
John Rothwell
Robert Rottapel, M.D.
Chris & Lesley Rowan
E. Ian & Barbara Rugeroni
Robert Russell
Geri Lea Russett
Scott & Caryl Rutledge
Edward & Donna Rygiel
Kevin Sack
Mahdokht Safari
Steven Salamon
The Salden Foundation
Salesforce Foundation
Salomon Smith Barney
Canada Inc.
Hari Sambasivam
Gustavo Saposnik, M.D.
Robert Sargeant, M.D.
SAS Institute (Canada) Inc
Michael T. Sawa, M.D.
Patricia Sawa
E. John Scherrer
Gerrard B. Schmid
Walter Schneider
Jacob H. Schneiderman, M.D.
Kay Schonberger
Martin Schreiber, M.D.
Robin & Ria Searle
Daniel Selchen, M.D.
Margaret D. Sellers

Philip Seltzer, M.D.
William Sewell
Harry & Lillian Seymour
Barry Shafran
Sachin Shah
Marjan Shahkarami
Virginia Shanker
Raymond A. Shaver
Robert & Sheila Sheaffer and Family
Robert Shearer
Gerald Sheff and Shanitha Kachan
Charitable Foundation
Shekter, Dychtenberg LLP
Tim Sheldon
Bruce Shewfelt
Shin, Dong-Sam & Choong-Nyu
Michelle Sholzberg, M.D.
Thomas J. Shoniker, M.D.
Judith Shostack
Dixon T.S. Shum
Rachel Shupak, M.D.
Signal Hill Equity Partners
Management Inc.
Heather A. Simmons
Gulshan Singh
Skill Builders Physiotherapy &
Rehabilitation Centre
Pamela Sloan
Catherine Smee
SMH Division of Urology
Lorna Smith
The Philip Smith Foundation
Stuart H. B. Smith
Henry H. So
Sobek Investments Ltd.
In memory of Lynn Somers
Michael Ryan Sommerville
Christine Song, M.D.
Behrad Sorousheh
Grace E. Speer
Randall Speller
Margaret Spence, M.D.
Spoolon Manufacturing Limited
Alex & Kim Squires
Stadia Industries Ltd.
Tom Steeves, M.D.
Anne Stephenson, M.D.
Lorne & Sue Stephenson
Michael M. Stewart
Pamela Stewart & David Plumb
Mark Stinson
Stonebridge Financial Corporation
Sharon Straus, M.D.
Lisa A. Stuart
Robert Stuebing
Murray P. Sullivan

SUMCAP Holdings Inc.
A. Dean & Lynda Summerville
Amanda Sun
Sundial Homes Ltd.
Joanne R. Sutherland
Robert & Donna Sutherland
Francoise Sutton
Nicole Swales
Leonard Sylvester
Ming Sum Szeto
Susanna Tam
Darrell H. Tan, M.D.
Phyllis Tanaka
Joey & Toby Tanenbaum
Kathy Y. Tang
Lillian Tanizaki
Ihor G. Taraschuk
Hong Siang Tee
Jerome M. Teitel, M.D.
Christopher Teshima, M.D.
Leon Tessler
Kein-Hong Thai
Bill & Bronwen Thomas
Tim Thomas
Aaron Thompson, M.D.
Douglas A. Thompson
Timothy Thompson
Ursula A. Thomson
Richard Thorman
Michael J. Thornburrow
Mark E. Tinnerman
James To
Jamie Tomlinson
Alex Tosheff
Anne Trafford
Carmen Tremblay
Gregory Trieloff
Martina A. Trinkaus, M.D.
Elizabeth & William Truelove
Denise Tsai
Yolande Tsampalieros
Julia Tsao
Betty Tse
Jacqueline Tuffin
Elizabeth Tullis, M.D.
Philip Turk
Robert Tweedy
Andrew Tylman
David Tyrrell
John Ulrich
Peter Vadas, M.D.
Rajanthini & Kandiah Vaithianathan
The Valecon Group
Sadhana Valia
Bert & Joy Van Kleef

Kesheyl Van Schilt
Linda M. Vanderburgt
Luc A. Vanneste
Barbara J. Vari
Jimmie Vassos
Francesco Vergati
John E. Verity
Sally M. Vernon
William Vesters
Anthony Villasa
Virox Technologies Inc.
Vision Critical
Michelle & John Visser
Michael Volpatti
Nicholas T. Vozoris, M.D.
Sergio Vulej
Rachel Wald, M.D. &
Ron Wald, M.D.
Phillip Walford
William R. Walker
Gladys E. Walrond
Christopher & Betty Wansbrough
Jo-Ann Ward
Julie Ward
John Warnock
John & Josie Watson
Nicholas Watson
William J. Watson, M.D.
Margaret A. Watts
Janet Webber
Harvey Weiner
Jordan Weinstein, M.D.
Janice Wells, M.D.
Estate of Clara Hazel Westlake
Sylvia Whiteside
Whitmer Trudel Charitable Foundation
Allyson J. Whyte
Wicklow Consulting Inc.
Wendell & Christina Wigle
Libby Wildman
Sykes Williams
Willington Martin Professional
Corporation
David & Susan Willmot
David Wilson
David & Dr. Elaine Wilson
J. Gary Wilson
The Honourable Michael H. Wilson
Tom Wilson
Wings of Hope Breast Cancer
Dinner Dance
Wireless National
Jack Wiseman
Barbara & Harvey Wolfe
The Honey & Leonard Wolfe Family
Charitable Foundation

Alan Wong
Camilla Wong, M.D.
Cheuk-Kwong & Lai Kwan Wong
Margarita Wong
Natalie Wong, M.D.
Robert C. Wong
Theresa Ko Yee Wong
Wei Yee Wong
Bonita Wood
Dennis Wood
Dr. Jeffrey & Christine Wood
Tom & Ruth Woods
Emma C. Wouters
Christopher D.C. Wright
William Wyatt
Andrew Yan, M.D.
Cathy Yanosik
Nick Yanovski
Kam-Ling Yao
David Yeh
Thambirajah Yogarajah
Morden S. Yolles
The Young Family Foundation
Joyce Young
Judy Young
Catherine Yu, M.D.
Bernadette Yuen
Darren Yuen, M.D.
Robert Zakoor
Jeffrey Zaltzman, M.D.
Zander Sod Co. Limited
Zevitz Family Holdings Ltd.
Kheang Zhao
Zycom Technology
Anonymous (19)

These donor lists reflect donations for the fiscal year ending March 31, 2018. We apologize for the accidental misspelling or omission of donor names. If you have not been appropriately recognized, please contact us at 416.864.5000 and we will correct the oversight in future publications.

OUR VOLUNTEERS

EXECUTIVE COMMITTEE

Frank Techar, Chair
Tony Arrell, C.M.
John Barford
John M. Cassaday, C.M.
Allan Donald
William Downe, C.M.
Robert J. Howard, M.D., MBA
Jane Humphreys
Pat Lace
Lili Litwin
Patrick Meneley
L. Alayne Metrick
Michael Norris
Timothy R. Price
Daniel F. Sullivan

FINANCE AND
AUDIT COMMITTEE

Allan Donald, Outgoing Chair
& Treasurer
Patrick B. Meneley, Incoming Chair
& Treasurer
Lloyd Barbara
Gregory S. Belton, C.M., C.V.O.
Louise Cannon
Mike Forsayeth
John S. Hunkin
Kate Stevenson
Lili Litwin
Tomi Nieminen

DONOR RECOGNITION
COMMITTEE

Melissa Martin, Chair
Wendy M. Cecil
Patti Cunningham
Terrence Donnelly, C.M., O.Ont.,
LL.D. (Hon.)
The Honourable Nicole C. Eaton
Anthony Graham, C.M., M.D.
Jane Humphreys
Daniel F. Sullivan
Jaime Watt

URBAN ANGEL GOLF CLASSIC

Michael J. Thompson, Chair
John Manning

ANGELS DEN COMMITTEE

Gwen Harvey, Co-Chair
John S. Hunkin, Co-Chair
Melissa Martin, Co-Chair
Weston McComb
Lisa Melchior
John Rothwell
Ori D. Rotstein, M.D.

GOVERNORS’ COUNCIL

Wendy M. Cecil, Chair
Carolyn Acker
William R. C. Blundell
Cynthia L. Bowden
Suzy Brenninkmeyer
Peter G. Cathcart
Patti Cunningham
William Stanley Deluce
Robert Hyland, M.D.
William James
Barbara Keenan
Peter Kopplin
Eve MacDougall
Diane Mara
Thomas G. McCarthy
Florence Minz
John F. (Jack) Petch, Q.C.
Patricia Pilon
Charlene Shevlen
C. Alexander Squires
M. Bernard Syron
Christopher D. C. Wright

PRESIDENT’S COUNCIL

Bill Butt, Chair
Najma Ahmed, M.D.
Laura Arrell
Rose Baker
Michael G. Boyd
Christine Brezden-Masley, M.D.
Sante Corona
David Crawford
Aldo Di Felice
Sebastian Distefano
Greg Dowdall
Michael G. Flux
Ed Giacomelli
Michelle Klaiman, M.D.
Michael Klubal
Jonathon Maguire, M.D.
Michael J. Mahoney
Vincent Mercier
Jeffrey Merk
William E. Quinn
Shubo Rakhit
Joseph Rooney
Ori D. Rotstein, M.D.
Heather A. Simmons
C. Alexander Squires
Lorne Stephenson
Colin Stewart
David Tennant
Hai Tran-Viet
Christopher D. C. Wright

ST. MICHAEL’S
YOUNG LEADERS
EXECUTIVE COMMITTEE

David Cooper, Outgoing Co-Chair
Bill Pringle, Co-Chair
Kay Schonberger, Incoming Co-Chair;
Co-Chair, Innovation (2017)
Jessica Weshler, Co-Chair,
Sponsorship
Peter Burkholder, Co-Chair,
Sponsorship
Cameron Cummings, Co-Chair,
The Bowler
Julia Nugent, Co-Chair, *The Bowler*
Graham Thompson, Co-Chair,
The Duffer
Josh Harris, Co-Chair, *The Duffer*
Kate Moraca, Co-Chair,
The Dodger
Mat Higgins, Co-Chair,
The Dodger
Chelsea Rasmussen, Chair,
The Giver
Adam Templeton, Co-Chair,
Digital Events
Max Mausner, Co-Chair,
Digital Events
Kyle D’Arcey, Co-Chair, Innovation
Laura Charter Carruthers, Chair,
Internal Communications
Melissa Batchelor, Chair,
External Communications
Lily Zhang, Chair, Treasurer

ANGEL BALL

John Doig, Co-Chair
James McPhedran, Co-Chair
Gillian Riley, Co-Chair
Clara Angotti
Salah Bachir
John Barford
Bob Macdonald
John MacIntyre
Chetan Mathur
Michael Norris
Kevin Teslyk
Julie Weiss
Beth Wilson
Lawrence Zucker

FINANCIAL HIGHLIGHTS

FINANCIAL STATEMENTS

The following information is an excerpt taken from St. Michael's Hospital Foundation's audited 2017-2018 financial statements. Our financials are audited by Deloitte and are available at stmichaelsfoundation.com/annualreport

SUMMARIZED BALANCE SHEET (amount in thousands of dollars)

As at March 31, 2018

	2018	2017
Assets		
Cash and cash equivalents	7,415	3,676
Other receivables and prepaid expenses	1,578	1,676
Investments - at fair value	163,608	173,212
	172,601	178,564
Liabilities		
Accounts payable and accrued liabilities	1,079	827
Deferred revenue	275	979
	1,354	1,806
Fund Balances		
General Fund	19,577	17,850
Restricted Fund	76,103	86,449
Endowment Fund	75,567	72,459
	171,247	176,758
	172,601	178,564

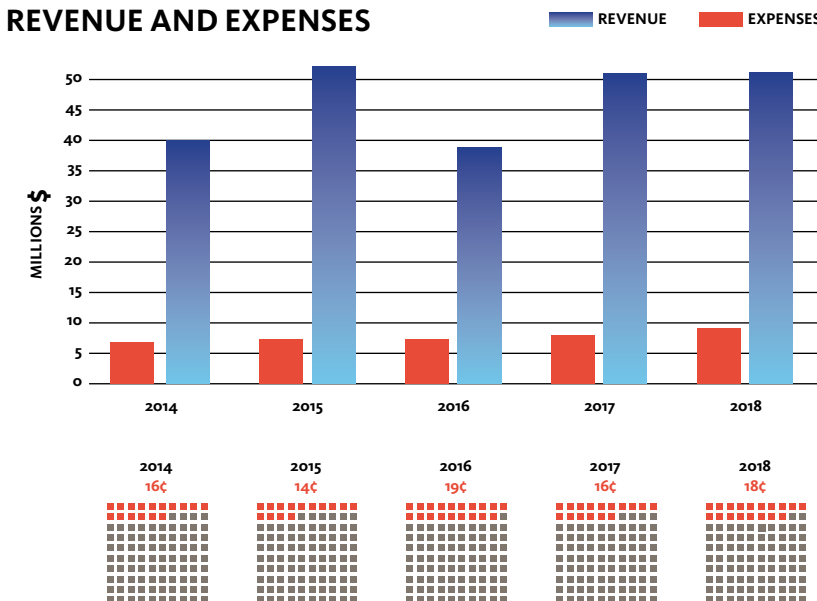
SUMMARIZED STATEMENT OF REVENUE, EXPENSES AND CHANGES IN FUND BALANCES (amount in thousands of dollars)

For the year ending March 31, 2018

	2018	2017
Revenue		
Donations	37,121	32,286
Bequests	6,044	6,445
Events - net of expenses	5,132	2,144
Investment income - net of expenses	3,988	11,199
	52,285	52,074
Expenses		
Fundraising and administrative	9,317	8,192
Excess of revenue over expenses before grants	42,968	43,882
Grants to St. Michael's Hospital	48,479	16,650
(Deficiency) excess of revenue over expenses and grants for the year	(5,511)	27,232
Fund balances - beginning of year	176,758	149,526
Fund balances - end of year	171,247	176,758

OUR TRACK RECORD

REVENUE AND EXPENSES



COST PER DOLLAR RAISED

This year, \$0.82 of every \$1.00 donated directly supported hospital needs. Our ongoing average for cost-per-dollar raised over the last five years is \$0.16.

THANK YOU FOR YOUR GENEROUS SUPPORT

We are honoured that you have chosen to support St. Michael's Hospital. If you have any questions, please call us at 416.864.5000. We will be happy to speak with you. Visit us at stmichaelsfoundation.com to request our full financial statements.

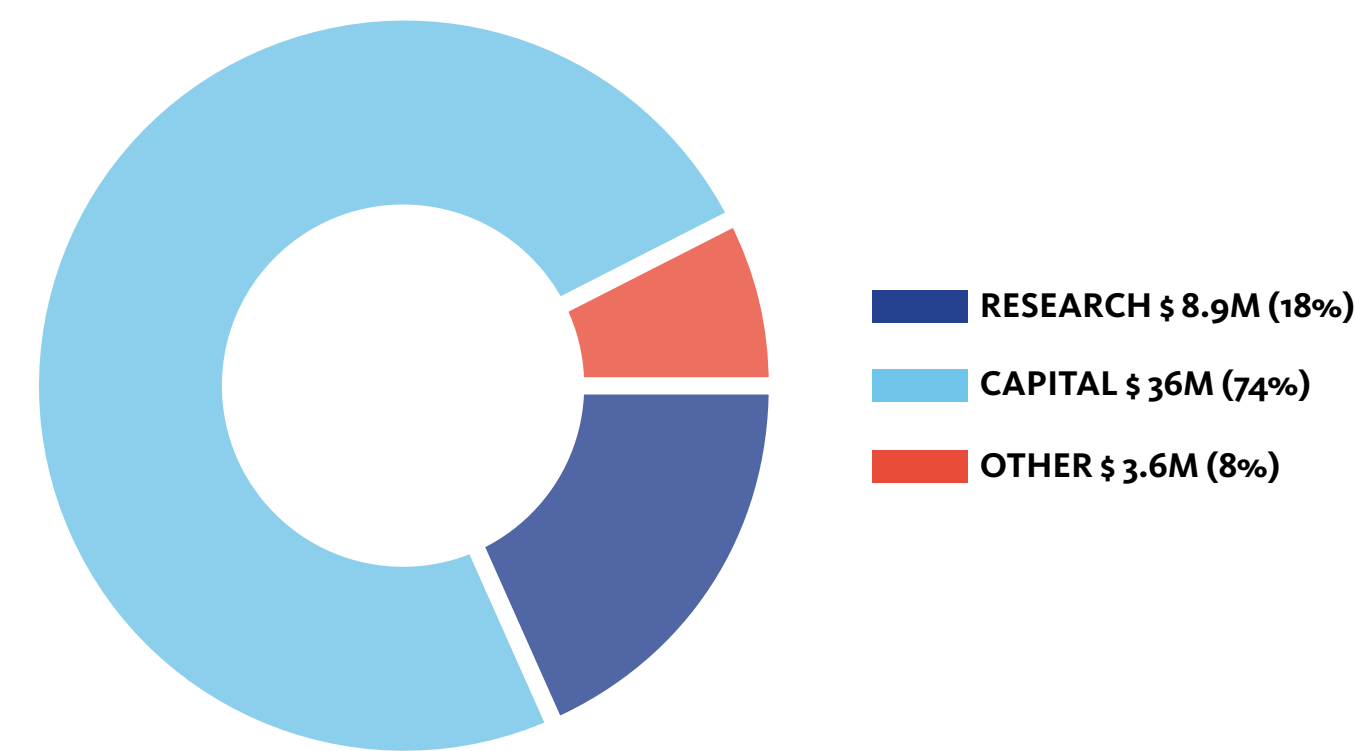
YOUR GENEROSITY

Your support makes an incredible difference. Because of your generous commitment to our hospital, we were able to grant \$48.5 million towards equipment, education and research at St. Michael’s.

Thank you for your gifts and for being a part of our St. Michael’s family.

2017-2018 | RAISED \$52.3 MILLION

Grants to St. Michael’s | Total: \$48.5 million transferred



In fiscal 2017-2018, we raised \$43 million net revenue for St. Michael’s. Of that, \$4.2 million is designated for endowed funds to be invested in perpetuity, with the annual returns supporting Chairs and other funds in the future. Generous donors enabled us to support many initiatives across the hospital to a total of \$48.5 million. Here are just some of the equipment and projects that your gifts supported:

Angels Den Research Awards
Centre for Urban Health Solutions
Colposcopy Beds – Gynecology
Eluxeo Endoscope – Endoscopy
Endowed and Term Chairs
Hana Table – Mobility
Heart & Stroke Research

James Drewry Stewart Fellowship in Multiple Myeloma and Malignant Hematology
Mini C-arm – Mobility
Model Schools Pediatric Health Initiative
Multiple Sclerosis Patient Registry

St. Michael’s Redevelopment
Transcathether Tricuspid Valve Project
Youth Mental Health Program

INVESTING IN THE BEST CARE

Our donors drive world-class research, education and care by investing in Funds and Chairs.

NAMED FUNDS

- The Paul Albrechtsen Professorship in Cardiac Prevention and Women’s Health – **Dr. Beth Abramson**
- The Angel Care Fund
- The Elizabeth S. Barford Multiple Sclerosis Patient Comfort Fund
- The Bitove Family Fellow in Neuroendovascular Therapeutics
- Professor Bruce Bird Award Fund
- The Bruce Family Lecture Fund
- The Centennial Scholarship Fund
- The Peter J. Devine Endowment Fund in Plastic Surgery
- The Eric and Heather Donnelly Endowment Fund
- The Sloane Freeman Infant and Child Urban Health Innovation Fund
- The Gales/Ray Family Endowment Fund
- The Sister Christine Gaudet Scholarship Fund
- The M. Audrey Giles Endowment Fund
- The Dr. H. Patrick Higgins Memorial Scholarship Fund
- The Daniel Hornik Memorial Fund
- The Johnson & Johnson Endowed Lecture in Education
- The Albert C. Johnston Research Fund
- The Richard Lewar Research Endowment Fund in Gastroenterology
- The Samuel and Rose Levy Charitable Endowment Fund
- The Dr. J.D. Loudon Memorial Library Fund
- The Love and Barford MS Research Fund
- The McCain Research Fund
- The Pat Nichols and Bob Tundermann Endowment Fund in Cancer Care
- The Louis L. Odette Family Urban Angel Fund for Homeless People
- The Professorship in Technology-Enabled Education – **Dr. Ryan Brydges**
- Rae Early Career Professorship in Breast Cancer Decision Tool Development
- Rae Early Career Professorship in Colon Cancer Surgical Care
- The Dr. S. Gordon Ross Memorial Fund
- The Savlov Family Endowment Fund for Arthritic Research
- The Squires-Chalmers Professorship in Medicine – **Dr. Tom Parker**
- The Diane Stewart Endowment Fund in Pancreatic Cancer
- The Sullivan Trust Fund
- The Parthenia Maria Wilson Nursing Endowment Fund
- The Wayne C. Wilson Endowment Fund
- The Dr. Gerald S. Wong Memorial Fund

RESEARCH CHAIRS AT ST. MICHAEL’S

- The Brazilian Ball Endowed Research Chair in Cardiology Research – **Dr. Howard Leong-Poi**
- The Chair in Homelessness, Housing and Health – **Dr. Stephen Hwang**
- The Chair in Trauma Research – **Dr. Sandro Rizoli**
- The Chair in Women’s Health
- The Cystic Fibrosis Canada Chair in Adult Cystic Fibrosis Research – **Dr. Elizabeth Tullis**
- The John David Eaton Chair in Multiple Sclerosis
- The Keenan Chair in Critical Care & Respiratory Medicine – **Dr. Laurent Brochard**
- The Keenan Chair in Medicine – **Dr. Arthur Slutsky**
- The Keenan Chair in Research Leadership – **Dr. Ori Rotstein**
- The Keenan Chair in Surgery – **Dr. Teodor Grantcharov**
- The Labatt Chair in International Neurosurgical Education – **Dr. Richard Perrin**
- The Michael Locke Term Chair in Knowledge Translation and Rare Lung Diseases – **Dr. Samir Gupta**
- The Wallace and Margaret McCain Chair in Therapeutic Endoscopy
- The Cara Phelan Chair in Critical Care Medicine – **Dr. Andrew Baker**
- The Robert and Dorothy Pitts Chair in Emergency and Acute Care Medicine – **Dr. Laurie Morrison**
- The Robert and Dorothy Pitts Chair in Integrated Clinical Research – **Dr. Muhammad Mamdani**
- The Fondation Baxter and Alma Ricard Chair in Inner City Health Research – **Dr. Ahmed Bayoumi**
- The Slight Family Term Chair in Advanced Therapeutic Endoscopy – **Dr. Paul Kortan**
- The Squires-Chalmers Chair for the Physician-in-Chief
- The St. Michael’s Hospital Volunteer Association Term Chair in Nursing Research – **Dr. Lianne Jeffs**
- The Term Chair in Cerebrovascular & Brain Tumor Surgery – **Dr. Julian Spears**
- The Term Chair in Foot & Ankle Research – **Dr. Timothy Daniels**
- The Term Chair in Fracture Care Research – **Dr. Aaron Nauth**
- The Term Chair in Intersectoral Solutions for Urban Health Problems – **Dr. Patricia O’Campo**
- The Nicole Muzzo Term Chair in Voice Disorders Research – **Dr. Jennifer Anderson**
- The Waugh Family Chair in Multiple Sclerosis Research – **Dr. Xavier Montalban**

BOARD OF DIRECTORS

OFFICERS



John Barford
Vice Chair, St. Michael's Foundation
President, Valleydene Corporation Limited



John M. Cassaday, C.M.
Vice Chair, St. Michael's Foundation
Former President & CEO,
Corus Entertainment



Allan Donald
Outgoing Treasurer,
St. Michael's Foundation
Partner, Deloitte



Robert J. Howard, MD, MBA
Vice Chair, St. Michael's Foundation
President & CEO, St. Michael's Hospital



Jane Humphreys
Vice Chair,
St. Michael's Foundation



Lili Litwin, CFRE
President,
St. Michael's Foundation



Patrick B. Meneley
Incoming Treasurer, St. Michael's Foundation
Executive Vice President, Chief Corporate
Development Officer, Hydro One Limited



L. Alayne Metrick, FAHP
Outgoing President,
St. Michael's Foundation



Frank Tchar
Chair, St. Michael's Foundation
Vice Chair, BMO Financial Group

DIRECTORS



Ammar Al-Joundi
President, Agnico Eagle
Mines Limited



Tony Arrell, C.M.
Chairman & CEO,
Burgundy Asset Management Limited



Lloyd Barbara
Vice Chairman,
Burgundy Asset Management Limited



Gregory S. Belton, C.M., C.V.O.
Executive Chairman,
Hub International HKMB|Ontario



David Cooper, CFA
Outgoing Co-Chair,
St. Michael's Young Leaders,
Regional Vice President, Sales, Trez Capital



Julie Di Lorenzo
President, Diamante Urban Corporation



William Downe, C.M.
Immediate and Past CEO,
BMO Financial Group



The Honourable Nicole C. Eaton
Senator (Ontario)



Timothy K. Griffin
Chairman, Connor, Clark and
Lunn Private Capital Limited



Gwen Harvey
Founder & President, Bridgewater
Family Wealth Services



Ken Hugessen
Partner,
Hugessen Consulting Incorporated



John S. Hunkin
Former CEO, CIBC



Pat Lace
Vice President,
Draxson Holdings Limited



John MacIntyre
Partner, Birch Hill Equity Partners
Management Incorporated



John Manning
Managing Director,
BMO Equity Capital Markets



Melissa Martin
Director, St. Michael's Foundation



Barry McInerney
President & CEO, Mackenzie Investments



James McPhedran
Executive Vice President,
Canadian Banking, Scotiabank



Shawn McReynolds
Managing Partner,
Davies Ward Phillips & Vineberg LLP



Bruce H. Mitchell
President & CEO,
Permian Industries Limited



Sherri Neldner
Director, St. Michael's Foundation



Jim Nikopoulos
President, ECN Capital Corporation



Michael Norris
Former Deputy Chairman,
RBC Capital Markets and
RBC Dominion Securities Incorporated



Kerry O'Reilly Wilks
Head of Legal, North America & UK, Vale



The Honourable David R. Peterson
P.C., Q.C., O.O.N.T., C. ST. J., C.L.H., D.U., L.L.D.
Chairman Emeritus,
Cassels Brock & Blackwell LLP



Timothy R. Price
Chairman, Funds Management,
Brookfield Asset Management



William (Bill) Pringle, CFA
Co-Chair, St. Michael's Young Leaders
Associate Portfolio Manager,
RBC Dominion Securities



Gillian Riley
Executive Vice President, Canadian
Commercial Banking, Scotiabank



Kay Schonberger
Incoming Co-Chair, St. Michael's Young
Leaders; Associate, Mergers & Acquisitions,
RBC Capital Markets



Douglas Sinclair, MD
Executive Vice President & Chief Medical
Officer, St. Michael's Hospital



Helen Sinclair
Special Advisor, Deloitte
CEO, BCN.tv



Kate Stevenson
Director, CIBC, Open Text Corporation,
CAE Inc., and Capital Power Corporation



Daniel F. Sullivan
Director, St. Michael's Foundation



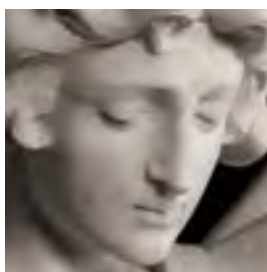
Michael J. Thompson
President, Ontario Acoustic Supply
Incorporated



Jaime Watt
Executive Chairman,
Navigator Limited



David Young, MD
Managing Director,
Actium Capital Advisors



St. Michael's Foundation

30 Bond Street, Toronto, Ontario,
M5B 1W8, Canada
416.864.5000
stmichaelsfoundation.com

Charitable Registration #122963663RR0001